



Porthole XXL Hanging Bag

2cm
Print
Check

Whilst these are called "T-Rex" this is a size specification only.

The T-Rex is for the teenager who just won't leave home ;)

Roo for XL, Kanga is for L, Wallaby for M and Possum for S.

This style of hanging pouch/bag will be used for many different species.

Sewing instructions can be found in files-

Sew-ARCCG Hanging Porthole Bag Instructions

Instruction adjustments for XXL

Step 3 - Increase side gap 10cm to allow for wider rod

- Do not leave 5cm gap at top, this joey will be too heavy for a hanger.

To minimise printing Front and Back pattern are combined.

Please check note on cutting before commencing.

Pattern includes 1cm seam allowance for outer & 1.5 for liner.

Finished, unfolded fabric measures 102cm wide 112cm long.

Confident sewers may find it easier to cut from dimensions listed right instead of printing and taping pattern

Bag Front

Cut on fold

Cut out circle

Seam allowance included

1 Liner - Fleece or Flannelette

1 Outer - Fleece

Bag Back

Cut on fold

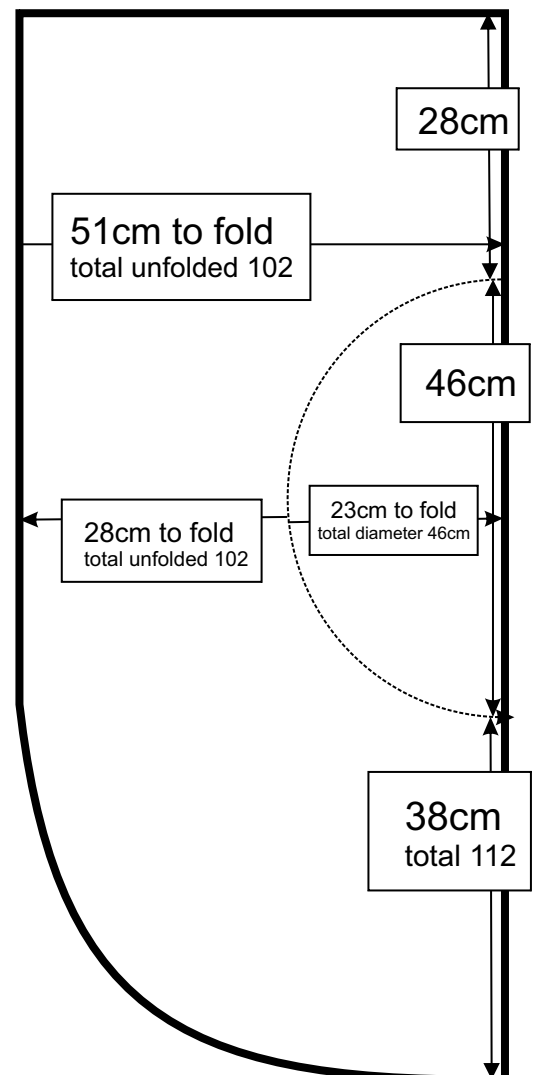
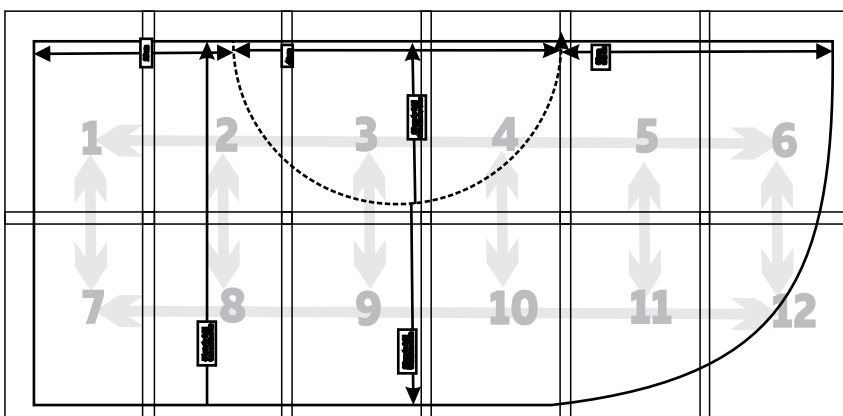
DO NOT cut circle

Seam allowance included

1 Liner - Fleece or Flannelette

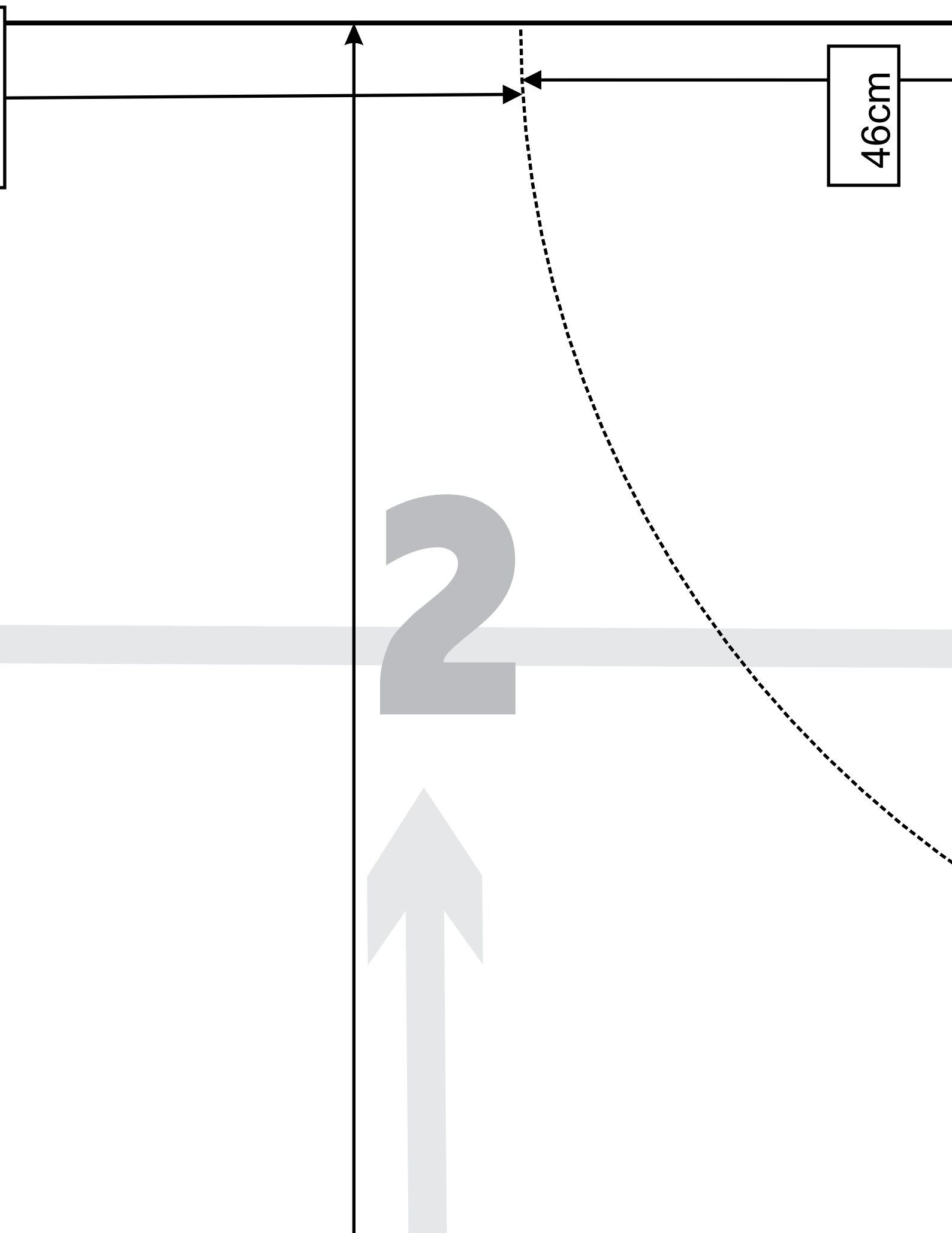
1 Outer - Fleece

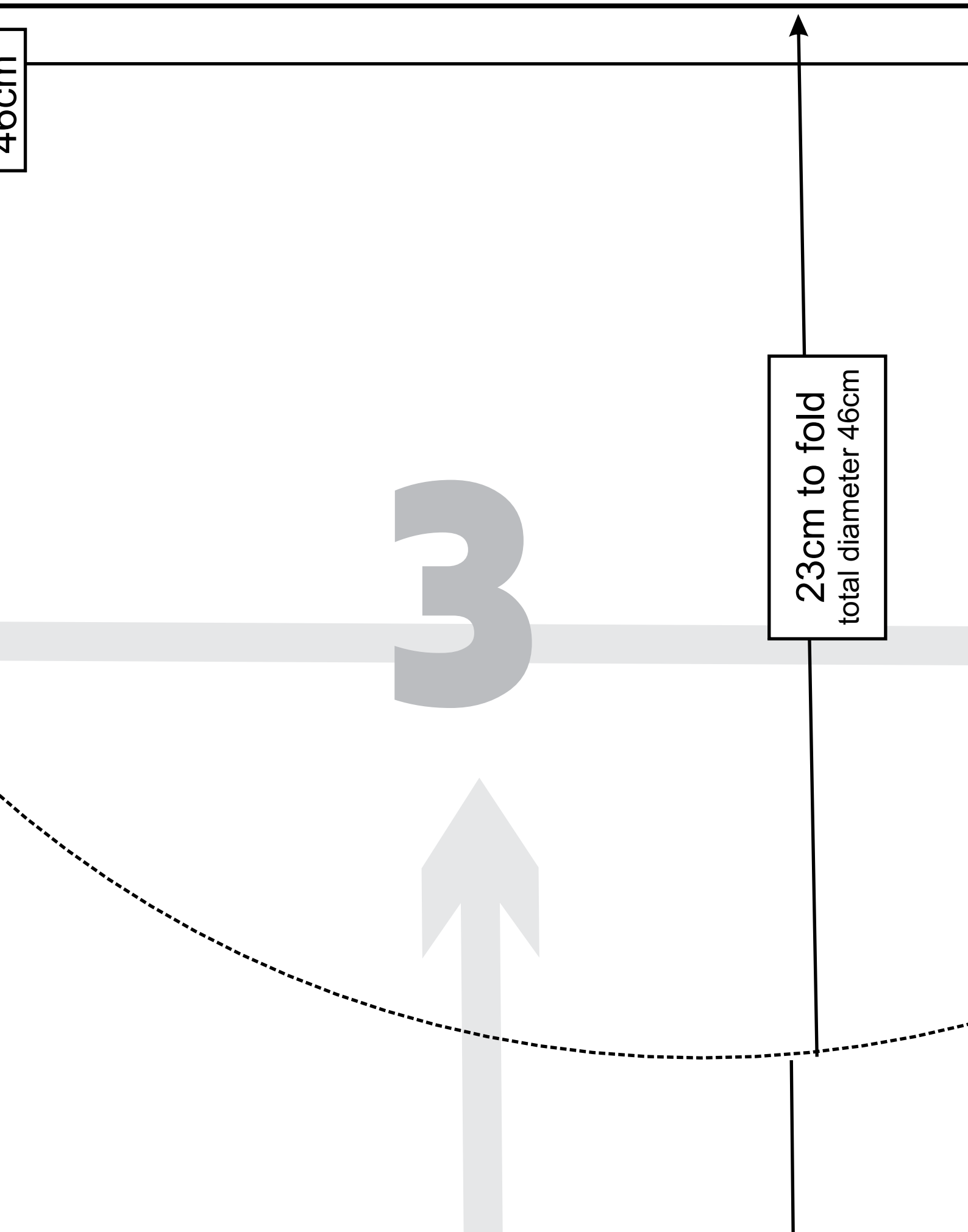
Pattern Layout



28cm

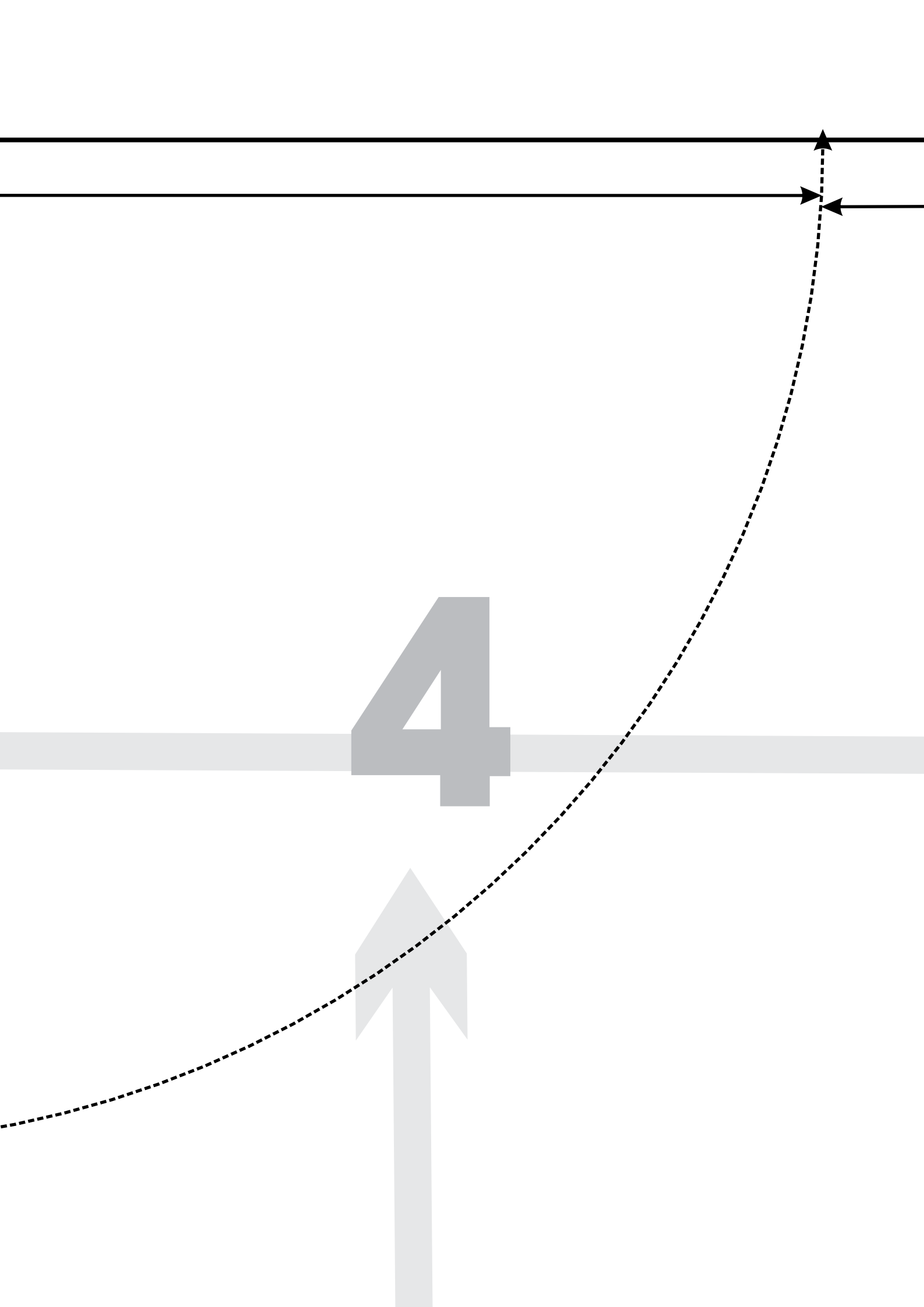
1





46cm

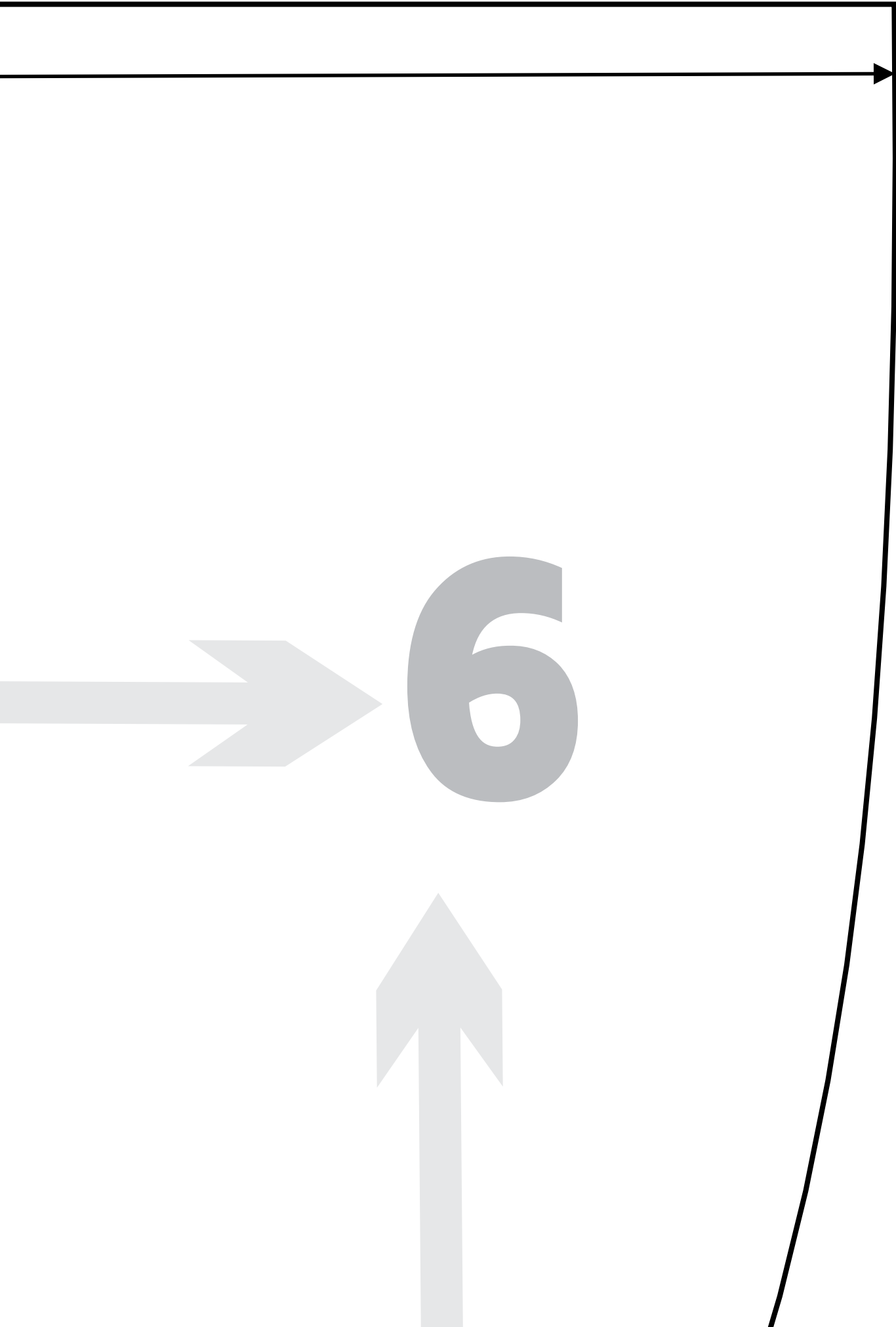
23cm to fold
total diameter 46cm



38cm
total 112

5







7



51cm to fold
total unfolded 102

8





9

28cm to fold
total unfolded 102





10



