



This tutorial has been written for the Animal Rescue Craft Guild. You will be able to find further guidance and support as well as other patterns in their Facebook group.

Before we begin:

Quilted nests are a fantastic alternative to a crochet version. They can be more easily washed and dried for use and feature a removeable liner to keep the outer nest clean. Interfacing will keep them sturdy but still soft enough for delicate babies.

4 sizes templates and fabric requirements have been included for some basic nest sizes however I cannot stress enough that you can make your own simply and easily using a plate as a template.

If making your own from a template, simply follow these simple instructions to get the necessary dimensions to complete the nest (read through the pattern first so this all makes better sense):

- Once you have selected your template simply measure it across the diameter (width) and enter that value into the online calculator below to work out the circumference of the circle.
<https://www.omnicalculator.com/math/circumference>
- Once you have worked out the circumference of your circle, add an extra 13cm (5") to account for the length your strip will need to be to create the wall. The height of the wall will be half the diameter plus 1 ½ cm (½") to allow for seams.

Eg – your circle template measures 40cm (16") across. Using the calculator above we know the circumference is approx. 126cm (51"). So, our strip to make the wall needs to be 56" long and 8.5" high to attach to the quilted bottom circle.

Note: Cut the strip wider and longer before quilting to allow for shrinkage as you go

- If you use a fabric thicker than quilting cotton for your nest (eg drill or denim) you may not need to interface the fabric before quilting.
- It is so much easier to quilt a square slightly larger than our cut circle will be and then cut your shape out once all quilting is done. The instructions below will help you through this part. This also means that all quilting lines will be properly encased in your seams. I highly recommend you keep this same approach for your wall of the nest as well – cutting your strip longer and wider prior to quilting and then trimming to size once quilted. This will waste some fabric but give a better quality and easier sew in the end.

With every nest you send make sure you add 4-5 liners, this means that the nests can remain in use while the carers are washing them.





Fabric requirements:

		6"	8"	10"	12"
Nest	Quilting cotton	7" square (x2) 3" x 21" (x2)	9" square (x2) 4" x 30" (x2)	11" square (x2) 4 ½" x 35" (x2)	13" square (x2) 5" x 41" (x2)
	Wadding	8" square (x2) 4" x 22" (x2)	10" square (x2) 5" x 31" (x2)	12" square (x2) 5 ½" x 36" (x2)	14" square (x2) 6" x 42" (x2)
	Iron on interfacing (light weight)	7" square (x2) 3" x 21" (x2)	9" square (x2) 4" x 30" (x2)	11" square (x2) 4 ½" x 35" (x2)	13" square (x2) 5" x 41" (x2)
Liner	Flannel or similar	7" square 5" x 21"	9" square 6" x 30"	11" square 6 ½" x 35"	13" square 7" x 41"

Please note: The measurements given for the strips above are for FINISHED size needed to make the nest. I would suggest cutting a little wider to allow for size change due to quilting.

Fabric Notes:

Linens should be 100% natural fibres – no polyester, synthetics or fabrics that have plastic or glitter. Breathability and softness are the priority. Flannelette, light cotton or jersey is recommended. Flannel is recommended for animals in cooler areas or through winter. The liner in this tutorial is made using a secondhand cotton flannel sheet.

Quilted nests in this tutorial are made from 100% quilting cotton, 100% cotton wadding and iron on interfacing. Please reuse and recycle where you can and reduce the impact on the environment. Thicker fabrics will mean interfacing will not need to be used.

PLEASE PRE-WASH ALL FABRIC BEFORE STARTING THIS PROJECT





Instructions:



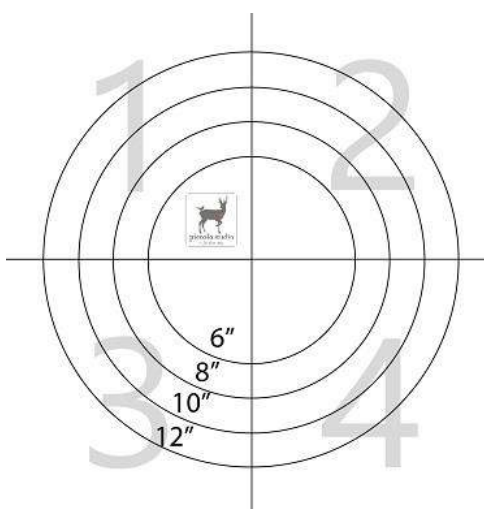
If using my provided templates, open the selected PDF template and print, setting the print scale at 100% and making sure the box “Scale to Fit” isn’t checked. The 1” test square on Page 1 will help to ensure the printing has been done correctly.

Cutting the top and left side of each pattern page layout as per image below

Tape the pattern together lining up edges and the shape (don’t forget to put tape on the back too).

Cut out the circle you would like to work with.

Note: *If planning on making a series of different sized nests simply cut from large to small to make the post of your template and to save on printing.*



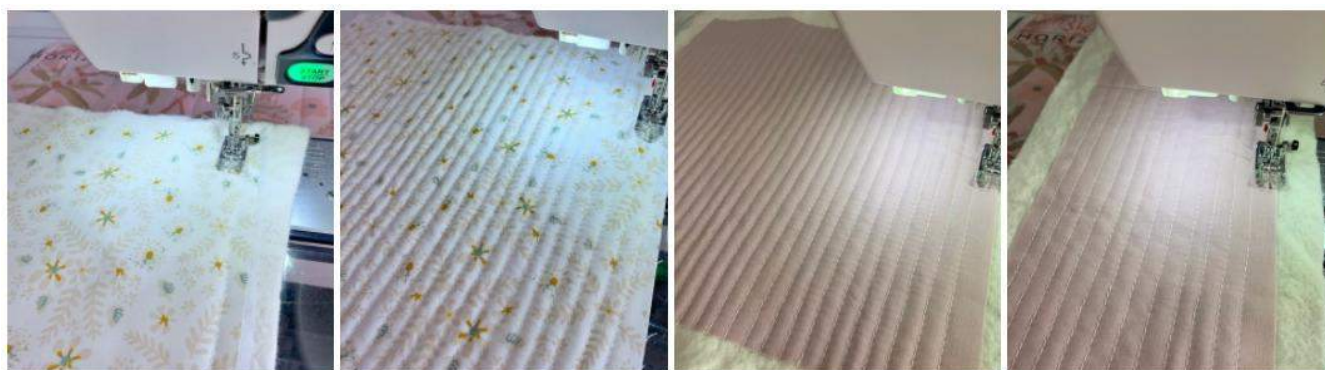


CREATING THE NEST

Take your cut squares and strips of fabric and interface the back using a light iron on interfacing (thick fabrics like drill or denim will not need interfacing).

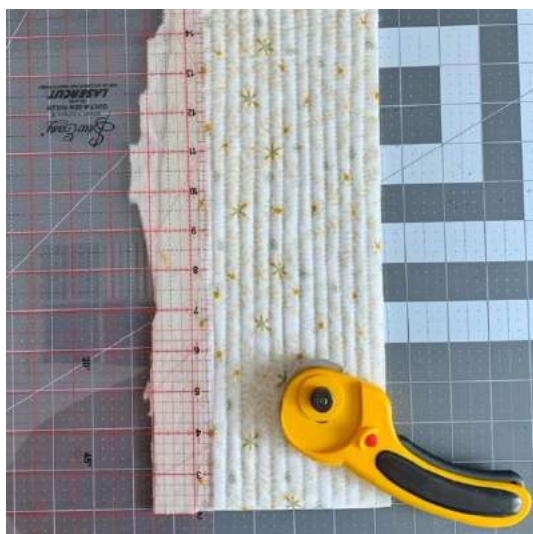
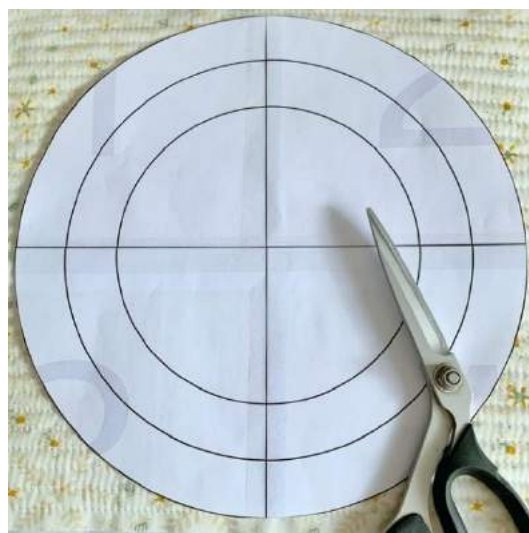


Place your interfaced fabrics on top of your wadding and, using a longer stitch length, quilt as desired. I quilted lines approximately $\frac{1}{4}$ " apart to add structure and stability to the nest.





Take your 2 quilted squares and cut out your circle for the base of the nest. You can use either the provided templates or make your own as described above.



Trim your strips of extra wadding to the size stated in the fabric requirements table, or from your own calculations.

Take one of the cut circles and place right side up on the machine. Take a quilted strip and place it on top of the circle, right sides together. Leaving a 3" tail at the beginning slowly attach the strip to the base taking care as you move around the circle. Stop around 3-4" from the start.





Overlap your two tails and mark a point where they overlap within the space left on the circle. Make sure you mark both tails and the point on the circle where they overlap.



Using a ruler, draw lines across both tails from your marked point.

Carefully line up your drawn lines and stitch along it, making sure to lock stitches beginning and end. Cut off excess.





Finish attaching to the circle using the mark drawn to line up your seam.



Your nest outer shell will now look like this. **DO NOT TURN RIGHT SIDE OUT.**

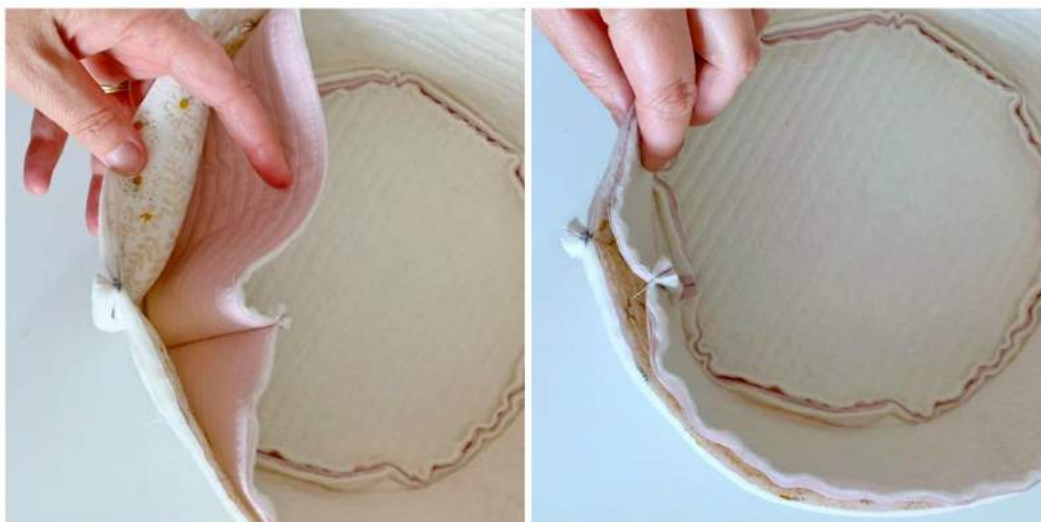


Repeat the process with your second circle and strip so you have both an outer and inner shell. **Turn your inner shell RIGHT SIDE OUT.**





Place the inner shell inside the other shell RIGHT SIDES TOGETHER. Slightly offset your seams to allow for ease of attaching by reducing bulk.



Stitch around the top of your shells leaving a 2-3" gap for turning.



Quilted nest and liner



Turn right side out, making sure the inner shell sits neatly inside the outer. Top stitch around the top TWICE making sure the turning gap is properly closed.



Congratulate yourself – the quilted nest is DONE!





CREATING THE REMOVEABLE LINER

The removeable liner creates a system where mess can be quickly cleaned up without needing to wash the entire nest. Making 4-5 ensures the carer can keep washing better under control.



Take your strip of fabric and mark a line 1" from the top.

Using your iron fold the top of the strip down to the drawn line and press. Fold over again and press to create a neat hem. Stitch down.



Quilted nest and liner



Place your liner circle RIGHT SIDE UP on the machine. Take a quilted strip and place it on top of the circle, right sides together. Leaving a 3" tail at the beginning slowly attach the strip to the base taking care as you move around the circle. Stop around 3-4" from the start.



Overlap your two tails and mark a point where they overlap within the space left on the circle. Make sure you mark both tails and the point on the circle where they overlap.



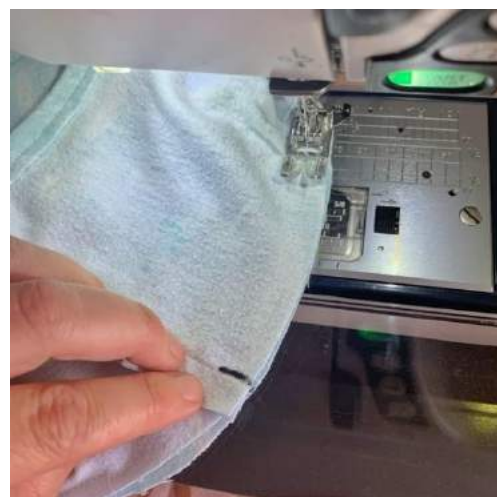
Using a ruler, draw lines across both tails from your marked point.



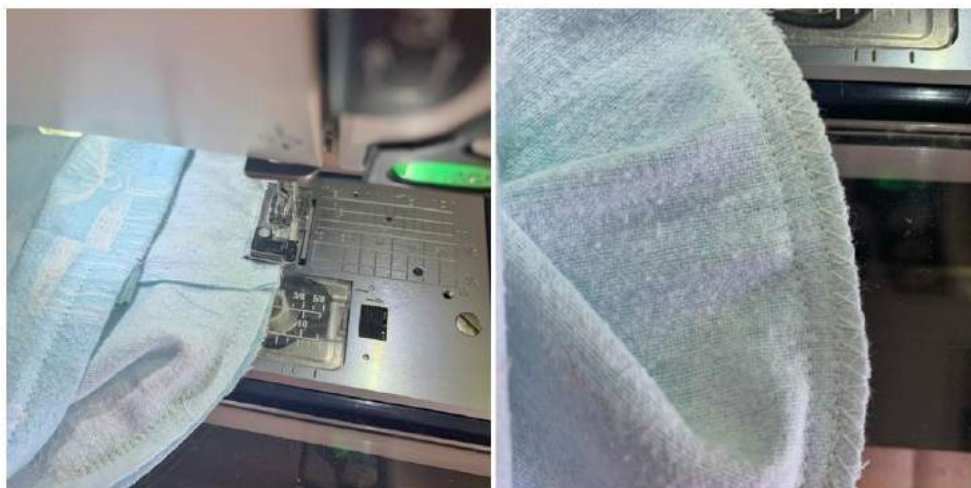
Carefully line up your drawn lines and stitch along it, making sure to lock stitches beginning and end. Cut off excess.



Finish attaching to the circle using the mark drawn to line up your seam.



Overlock or zig zag stitch the raw edges.





Your liner is now finished. Place inside your quilted nest and fold down.



Fine print.

This tutorial has been created by Sarah Scott of Piccolo Studio and is intended for personal use only. The pattern must not be reproduced, distributed or sold in part or whole in any form. Please credit Piccolo Studio as the original creator of the tutorial at time of sale and in any online promotion. Piccolo Studio reserves the right to change or end this policy at any time. Please do not share photos of this tutorial but rather links or the entire PDF. This stops people missing parts of instructions and getting confused

Completed nests can be sent to:

Nicole Blums
c/- The Rescue Collective
4/55 Tenby St
MOUNT GRAVATT QLD 4122
AUSTRALIA